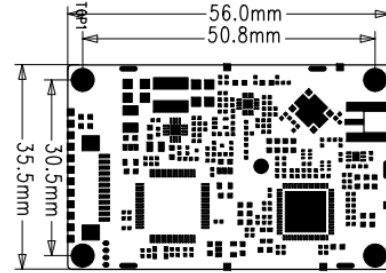


UHF RFID Reader Module

RTEC R1101-M



- Excellent Reading Performance
- Anti-collision Algorithm
- 18000-6C Full Compatible
- Low-Power Design
- Resist Bad Environment
- Strong Stability



Mounting Hole $\Phi 2.7$ mm

Device Spec

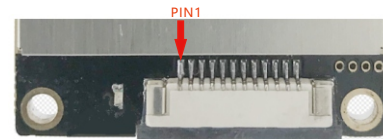
Dimensions	56 x 30.5 x 7 mm
Weight	28 g
Material	Die-cast aluminum+FR4
Input Voltage	DC 5V
Standby Current	<20mA +/-5%
Work Current	750mA +/-5%
Operating Temp.	- 20 °C - + 65 °C
Storage Temp.	- 40 °C - + 85 °C
Humidity	5%RH - 95%RH (no condensation)
Air Protocol	EPC global UHF Class 1 Gen 2 ISO 18000-6C
Frequency	902-928MHz FCC 865-868MHz ETSI
Output Power	0 – 33dBm
Output Power Precision	± 1 dB
Output Power Flatness	± 0.2 dB
ReceiveSensitivity	< -78 dBm
Reading Rate	> 400 tags/s
Tag RSSI	Supported
Ambient Temp Monitor	Supported
Host Communication	UART TTL Level
Band Rate	115200 bps
Cooling Mode	Air cooling
Antenna Interface	1 Port 50 Ω RF connector MMCX

Order Information

Product #	RTEC R1101
Product Name	R1101-M Reader Module

Interface Definition

PIN#	Interface	Description
1	VIN	+5VDC
2	VIN	+5VDC
3	GND	Ground
4	GND	Ground
5	EN	High LLT Level boot the module
6	GPIO1	Input \ Output IO 3.3V TTL Level
7	GPIO2	
8	BUZZER	
9	RXD	UART Receive 3.3V TTL Level
10	TXD	UART Transmit 3.3V TTL Level
11	RESET	
12	LED	Control Reading LED



12 PIN FPC Connector, 1.0mm

Optional: Development Board

Input Voltage	DC 12-24V (Recommend 12V3A)
LED	Red: Power, Blue: Reading
GPIO	2 input, 2 electric relay
Comm Interface	RS-232, RJ45



RTEC Singapore

57 Mohamed Sultan Road
#01-05 Sultan Link
Singapore 238997

RTEC China

L3 Enterprise accelerator B,
Scientific innovation District, MianYang City
Sichuan, China 621000